

# Item 6a: Workshop Elk County Water District

Draft

Municipal Service Review

&

Sphere of Influence  
Update

February 3, 2025



# Municipal Service Review (MSR)

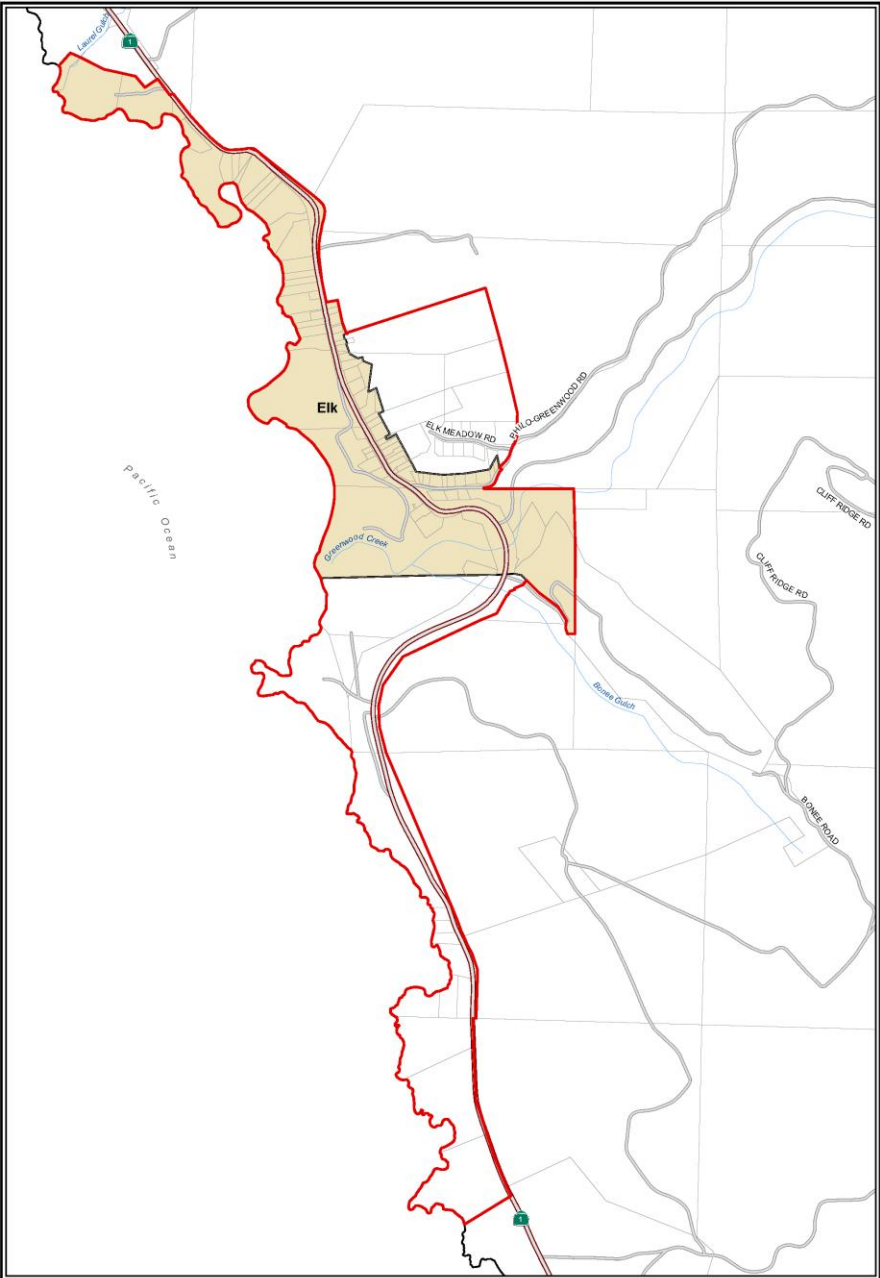
---

- A MSR is a study of a local agency's governance and operations
- Provides an inventory and analysis of agency services:
  - Capacity
  - Financial ability
  - Accountability
  - Anticipated growth
- Second MSR for the District

# Elk County Water District

---

- Formed April 22, 1957
- Provides water supply, treatment, and distribution
- 128 acres in size
- Service provided to approximately 102 developed lots
- 45 permanent residents with up to 100 seasonal residents
- Two Outside Agency Service Areas (1 and 2)
  - 10 parcels east of HWY 1 and 12 parcels extending south of the ECWD boundary, west of HWY 1

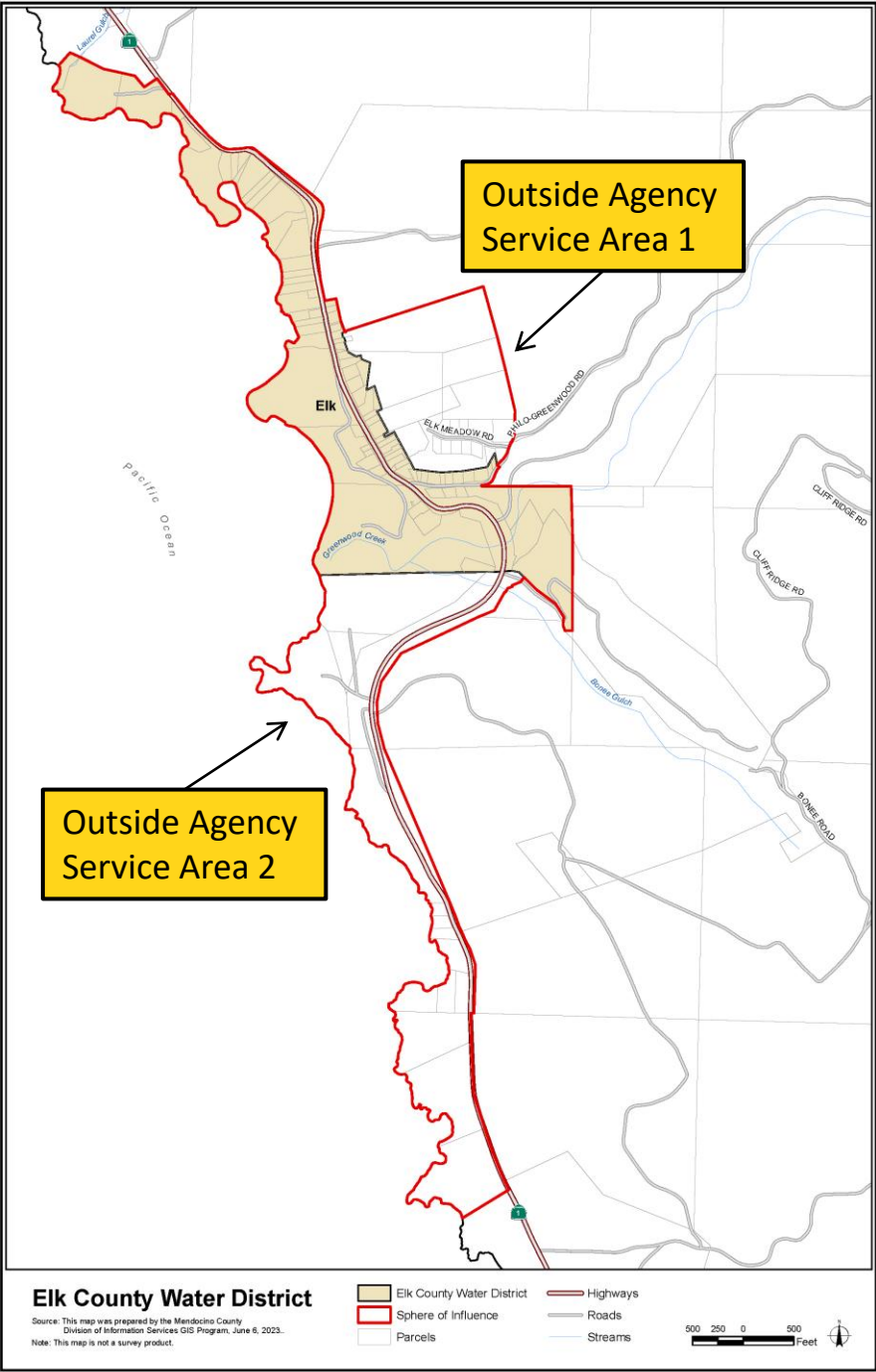


**Elk County Water District**

Source: This map was prepared by the Mendocino County Division of Information Services GIS Program, June 6, 2023.  
 Note: This map is not a survey product.

- Elk County Water District
- Sphere of Influence
- Parcels
- Highways
- Roads
- Streams





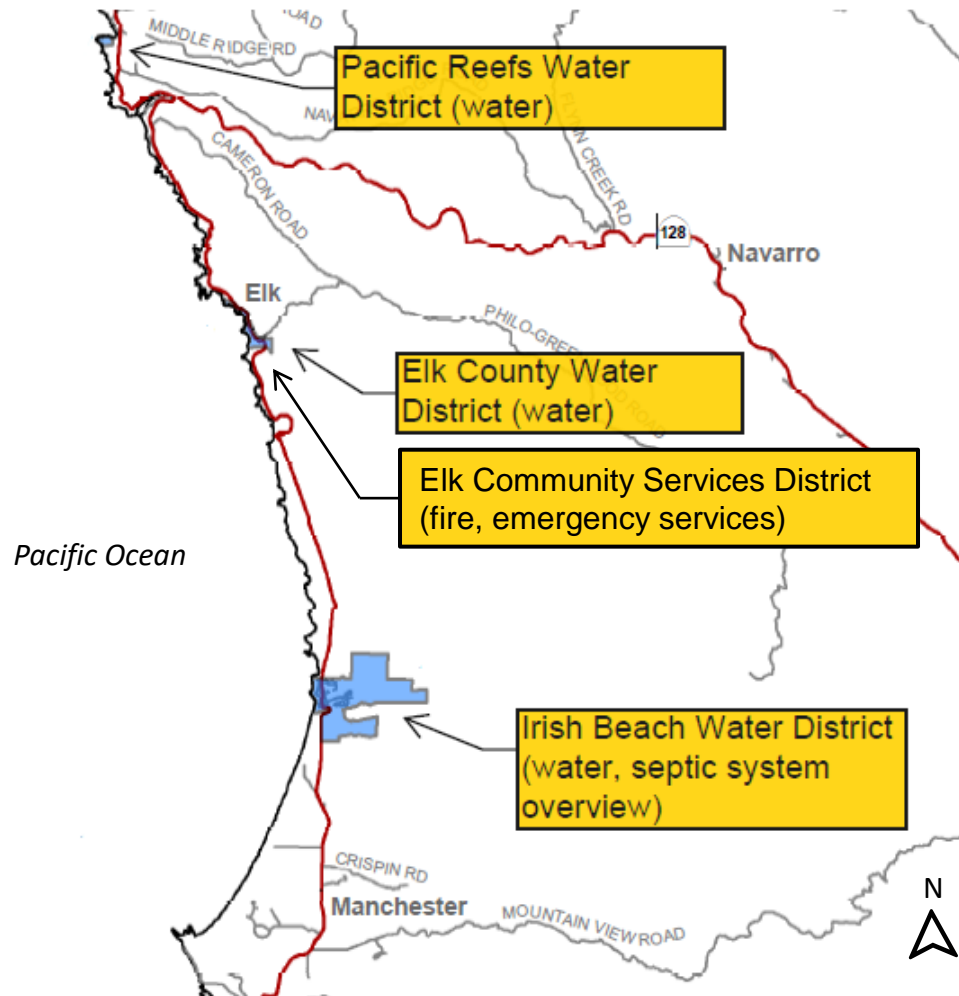
**Elk County Water District**

Source: This map was prepared by the Mendocino County Division of Information Services GIS Program, June 6, 2023.  
 Note: This map is not a survey product.

- Elk County Water District
- Sphere of Influence
- Parcels
- Highways
- Roads
- Streams



# Regional Providers



- Pacific Reefs Water District
  - Water
- Irish Beach Water District
  - Water
  - Septic system overview
- Elk Community Services District
  - Fire
  - Emergency Services

# District Management & Administration

---

- District Manager/Water Treatment Plant Operator
  - Oversees three part-time employees: Secretary, Treatment and Distribution Operator, and Distribution Operator/Maintenance Worker
- Contract Staffing and Services:
  - Financial Auditor
  - District Counsel
  - Information Technology Support



# District Services

---

## Water Supply

- Primary Source: Groundwater
- Greenwood Creek and Bonee Gulch diversions
- 21.476 average acre-feet per year
- 19,160 average gallons per day

Two water storage facilities

Water treatment plant

Pipeline network: approx. 3 miles

Hydrant system

System at 62 percent capacity



# Sphere of Influence

---

- Plan for the probable future boundary and service area of an agency as adopted by the Commission
- SOI last updated in 2015 – coterminous except for two Outside Agency Service Areas (1 and 2)
- No proposed changes to the SOI
- District concurs

# Process

---

- Hold the workshop for the Commission to review, discuss, and request revisions on the Draft MSR/SOI Study and welcome public comment
- No formal action will be taken on the Draft MSR/SOI Study today
- A public hearing will be scheduled for formal consideration of the study by the Commission

# Acknowledgements

---

## Elk County Water District

Charles Acker, District Manager

Rosi Acker, District Secretary